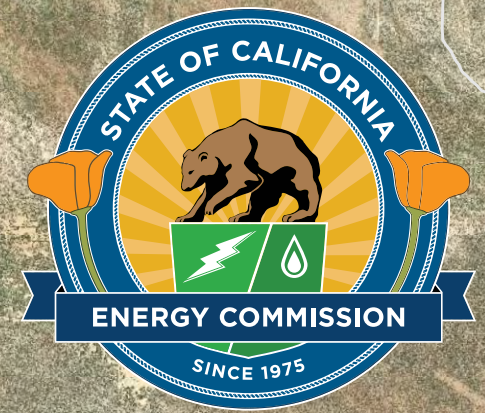
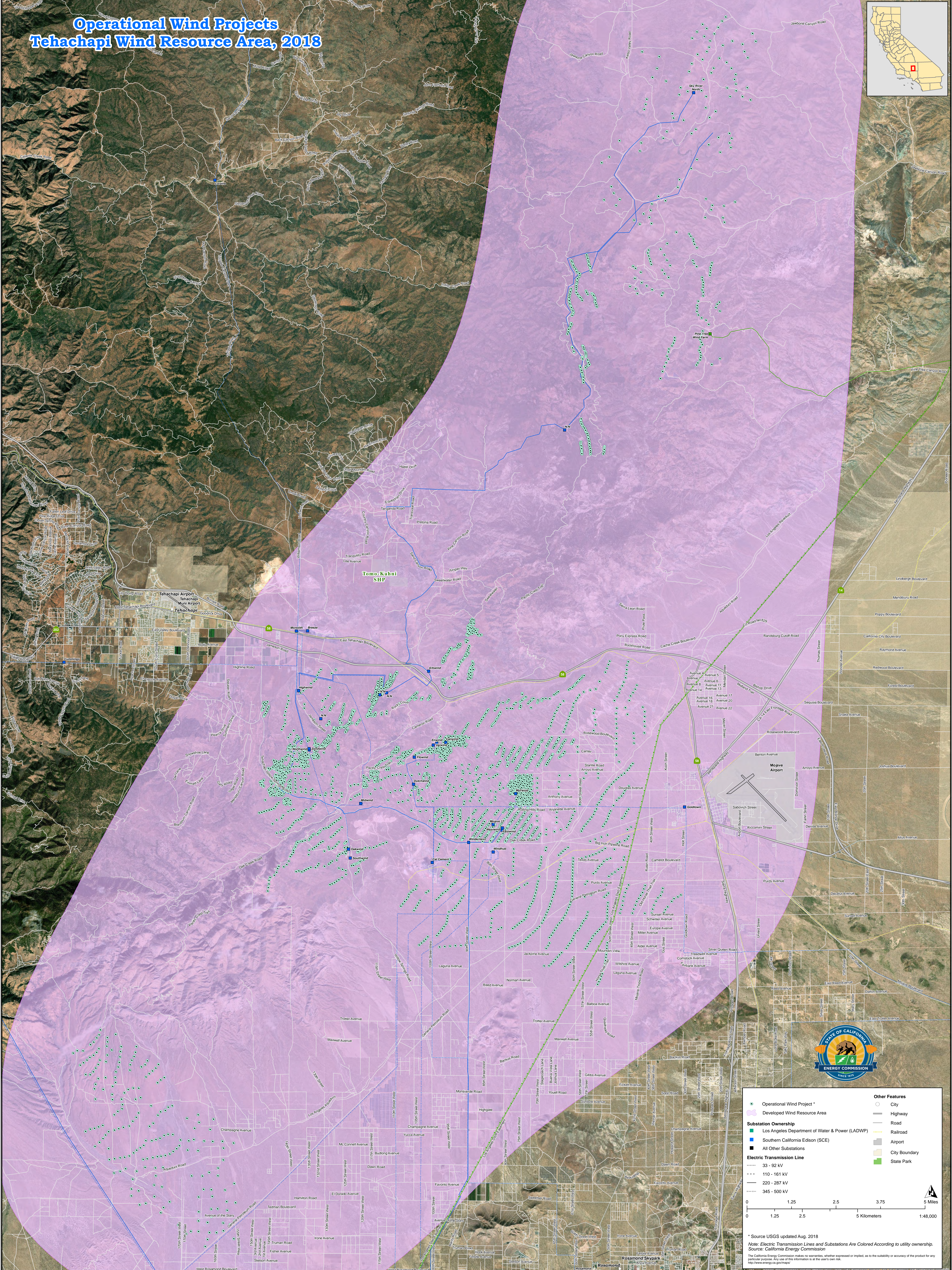


Operational Wind Projects Tehachapi Wind Resource Area, 2018



<ul style="list-style-type: none"> ● Operational Wind Project * Substation Ownership ■ Los Angeles Department of Water & Power (LADWP) ■ Southern California Edison (SCE) ■ All Other Substations — Electric Transmission Line --- 33 - 92 kV --- 110 - 161 kV --- 220 - 287 kV --- 345 - 500 kV 	<ul style="list-style-type: none"> City Highway Road Railroad Airport City Boundary State Park
--	--

* Source USGS updated Aug, 2018
 Note: Electric Transmission Lines and Substations Are Colored According to utility ownership.
 Source: California Energy Commission
<http://www.energy.ca.gov/maps/>

0 1.25 2.5 3.75 5 Miles
 0 1.25 2.5 5 Kilometers 1:48,000